



**ALASKA DIVISION OF HOMELAND
SECURITY & EMERGENCY MANAGEMENT
SITUATION REPORT
24-359• December 24, 2024**



Toll-Free 1.800.478.2337

Anchorage Area 907.428.7000

SEOC 907.428.7100

<p><u>SEOC Preparedness Level</u> Level 1-Routine Operations</p>	<p>http://ready.alaska.gov</p>	<p><u>National Terrorism Advisory System:</u> Read the NTAS Bulletin here</p>
<p><u>Maritime Security (MARSEC)</u> Level:1- Minimum Appropriate Security Measures</p>	<p>WHO Novel Coronavirus Pandemic (COVID-19): 2019 Novel Coronavirus</p>	<p><u>Alaska Military Installation Force Protection</u> <u>Level:</u> FPCON Bravo</p>

(Significant changes from previous situation reports are red.)

Significant Issues:

None

Department of Health (DOH):

For current information, see: <https://health.alaska.gov/dph/Pages/default.aspx>
<https://health.alaska.gov/dph/Emergency/Pages/prepared/default.aspx>

NTAS Bulletin:

The U.S. Department of Homeland Security issued an updated National Terrorism Advisory Bulletin on May 24, 2023. The current and expired bulletins can be viewed at the below link.
<https://www.dhs.gov/national-terrorism-advisory-system>

Travel Alerts and Conditions:

For current driving conditions, dial 511 or visit: <https://511.alaska.gov/>

Barry Arm Landslide / Tsunami Risk:

For the latest information on the Barry Arm Landslide and Tsunami risk, click here:
<https://dggg.alaska.gov/hazards/barry-arm-landslide.html>

Earthquakes:

United States Geological Service (USGS) Earthquake Information: <http://earthquake.usgs.gov/>
National Tsunami Warning Center: <http://tsunami.gov/>

Alaska Volcanoes:

Great Sitkin Alert Level: Watch and Aviation Color Code: **Orange**
Mt. Spurr Alert Level: Advisory and Aviation Color Code: **Yellow**
For Alaska Volcano updates, go to: <https://www.avo.alaska.edu/>

Air Quality Index (AQI) Advisories:

For the most up-to-date Air Quality Index Advisories:

<http://dec.alaska.gov/Applications/Air/airtoolsweb/Home/Index>

Spills of Oil and Hazardous Substances:

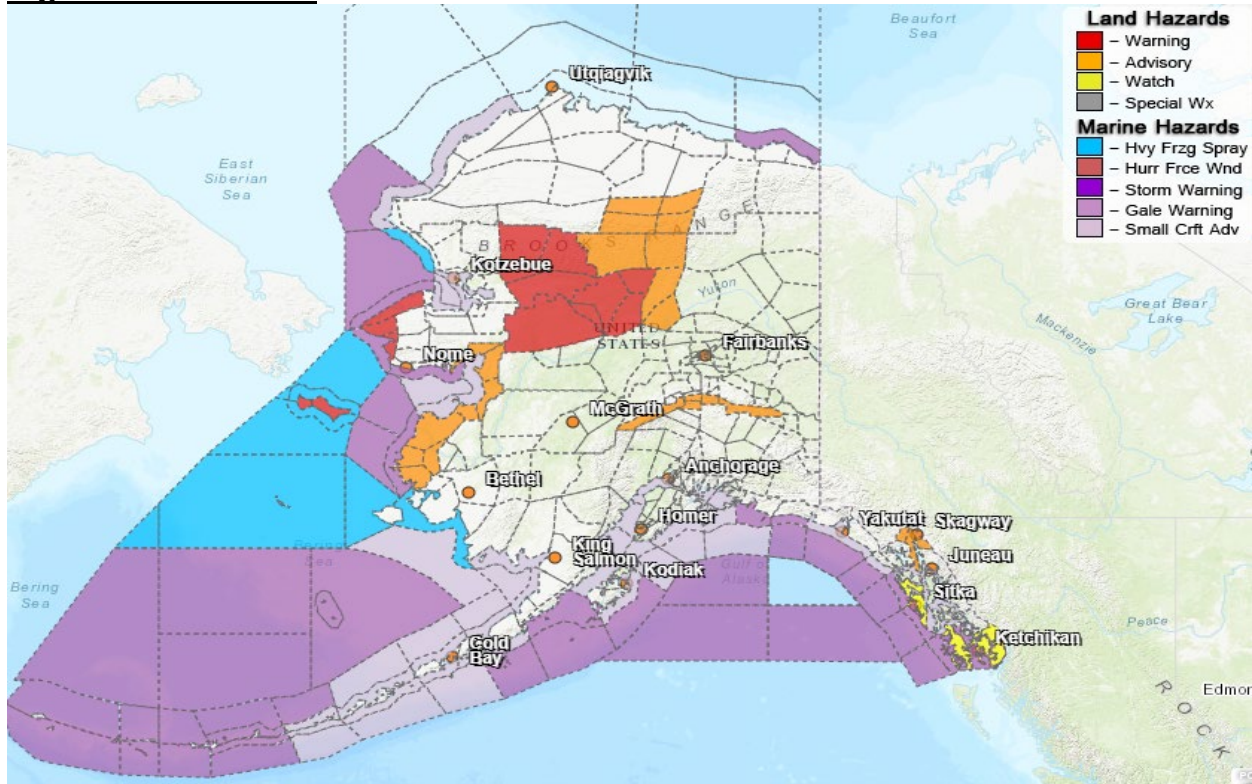
The Alaska Division of Environmental Conservation (ADEC) Spill Prevention and Response page is located at: <https://dec.alaska.gov/spar/>

Alaska Cyber Security Information:

State Employees may sign up for cybersecurity notifications and alerts at:

<https://oit.alaska.gov/security>

Significant Weather:



Special Weather Statement:

- **St Lawrence Island**-Ice accumulations from freezing spray possible along with heavy snow squalls through Wednesday.
- **Southern Denali Borough, Eastern Alaska Range South of Trims Camp**-winter weather advisory remains in effect until noon today.

Winter Weather Advisory:

- **Eastern Norton Sound and Nulato Hills, Yukon Delta Coast**-from noon Tuesday to 3pm Wednesday.
- **South Slopes of The Central Brooks Range, Dalton Highway Summits**-winter weather advisory remains in effect until 3pm this afternoon.
- **Central Brooks Range**-in effect until 6am Wednesday.
- **Haines Borough and Klukwan**-winter weather advisory remains in effect until 6am Wednesday.

High Wind Watch:

- **Shishmaref, Bering Strait Coast, St Lawrence Island**-in effect until midnight Tuesday night.
- **City and Borough of Sitka, Prince of Wales Island, Ketchikan Gateway Borough,**

Annette Island-remains in effect from late tonight through late Wednesday night.

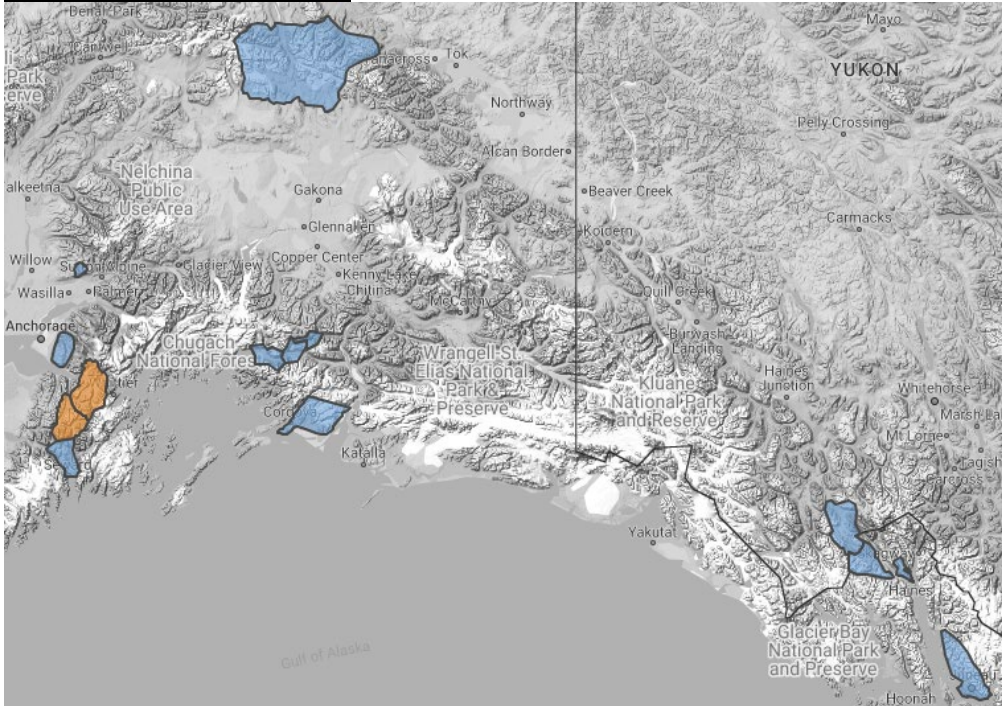
Winter Storm Warning:

- **Upper Kobuk Valleys, Lower Koyukuk Valley, South Slopes of the Western Brooks Range**-in effect until 3pm Wednesday.

For more information and the most current Weather, Watches/Warning/Advisories go to:

<https://www.weather.gov/arh/>

Avalanche Conditions:



Turnagain Pass – Moderate 1,000', Considerable above 2500'

Summit Lake – Moderate 1,000', Considerable above 2,500'

For more information and the most current avalanche conditions, go to: <https://alaskasnow.org/>

The Next Situation Report will be on **December 26, 2024**. An interim report will be prompted by a significant change in the situation or the threat level. This report is posted on the internet at

<https://ready.alaska.gov/sitrep>.

To register for email distribution, PLEASE go to:

<http://list.state.ak.us/mailman/listinfo/dhsem.situation.report>.

Direct questions regarding this report to the SEOC at 907-428-7100 or seoc@alaska.gov.